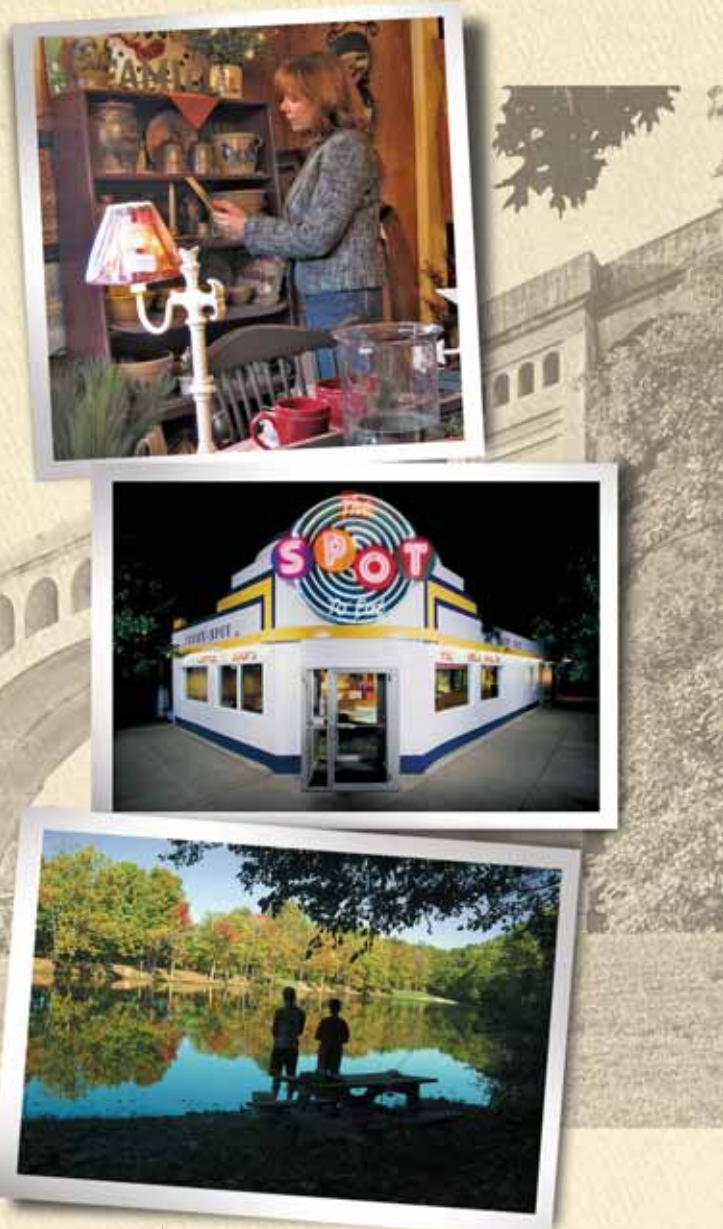


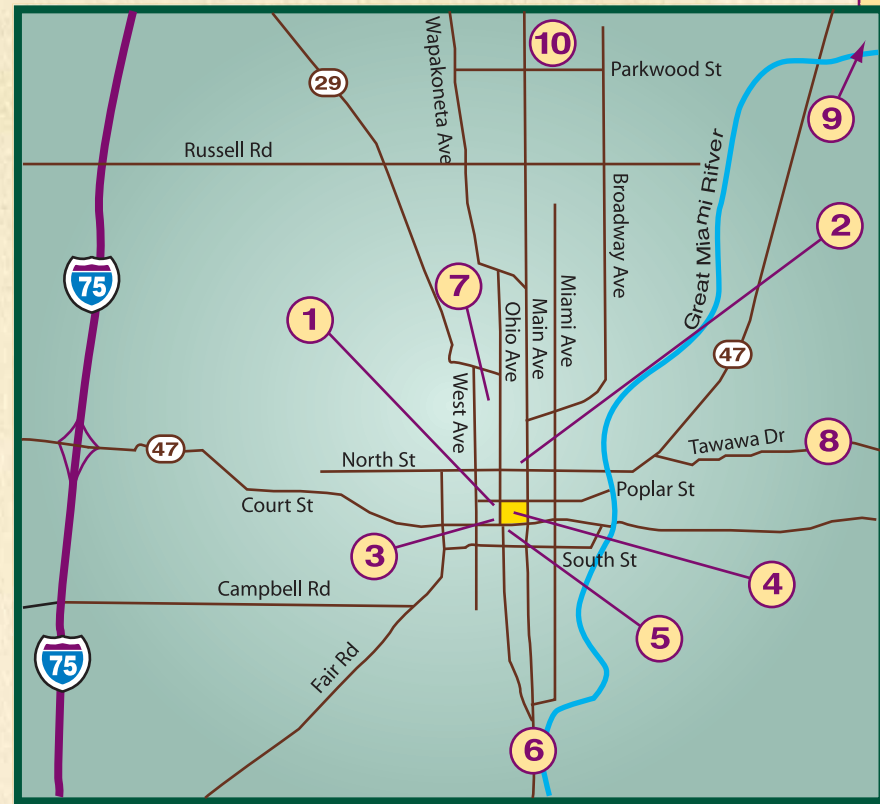
SIDNEY OHIO

A Guide to Area Attractions



POINTS OF INTEREST

City of Sidney and Shelby County



CITY OF SIDNEY

- 1 **Sidney Visitors Bureau**
(937) 492-9122
or toll free: (866) 892-9122
- 2 **Ross Historical Center**
(937) 498-1653
- 3 **Monumental Building**
- 4 **Shelby County Courthouse**
- 5 **Peoples Federal Savings & Loan**
(937) 492-6129
- 6 **Big Four Bridge**
- 7 **Great Stone Castle**
(937) 498-4728
- 8 **Tawawa Park**
- 9 **Shelby Oaks Golf Course**
(937) 492-2883
- 10 **YMCA**
(937) 492-9134



www.VisitSidneyShelby.com

SHELBY COUNTY

- 11 **Fort Loramie Wilderness Trail Museum** (937) 295-3855
- 12 **Lockington Dam and Reserve** (937) 773-4818
- 13 **Lake Loramie State Park** (937) 295-2011
- 14 **Airstream Factory Tour** (937) 596-6111
- 15 **Country Concert at Hickory Hill Lakes** (937) 295-3000

ACCOMMODATIONS

- Comfort Inn of Sidney**, 1959 West Michigan St. (937) 492-3001
- Country Hearth Inn**, 2009 West Michigan St. (937) 492-9164
- Days Inn of Sidney**, 420 Folkerth Ave. (937) 492-1104
- Hampton Inn**, 1600 Hampton Circle (937) 498-8888
- Quality Inn**, 400 Folkerth Ave. (937) 492-1131
- Sidney Motel**, 818 Wapakoneta Road (937) 492-4800
- Travel Inn**, 2009 B, West Michigan St. (937) 575-1871

RESTAURANTS

- | | | |
|--|---|--|
| Adrianna's Italian Restaurant
(937) 492-0556 | Clancy's
(937) 492-8820 | The Spot
(937) 492-9181 |
| The Alcove
(937) 492-3737 | Culver's
(937) 493-0015 | Sonic
(937) 710-4956 |
| Al's Pizza
(937) 498-2151 | East of Chicago Pizza
(937) 493-0066 | Subway
(937) 492-1200 |
| Applebee's
(937) 498-1833 | In Good Taste Cafe'
(937) 498-9463 | |
| Arby's
(937) 492-8167 | KFC
(937) 492-0081 | |
| BK Rootbeer
(937) 492-7886 | Lee's Chinese Cuisine
(937) 492-9282 | |
| Bob Evans
(937) 492-3995 | Lee's Famous Recipe Chicken
(937) 498-1544 | Super Subby's
(937) 498-4028 |
| Broad Street Grille
(937) 710-4950 | Long John Silvers/A&W Rootbeer
(937) 497-7785 | Taco Bell
(937) 492-9371 |
| Buffalo Wild Wings
(937) 492-2282 | Marco's Pizza
(937) 498-0333 | Tim Horton's/Coldstone Creamery
(937) 492-8336 |
| Burger King
(937) 492-9776 | McDonald's
(937) 492-4900 | Toone P. Wiggins
(937) 492-4103 |
| Cassano's
(937) 492-3115 | Perkins
(937) 492-3131 | Waffle House
(937) 498-9119 |
| Cazadores Mexican Restaurant
(937) 492-9883 | Pizza Hut
(937) 492-1102 | Wendy's
(937) 492-5696 |
| China Garden Buffet
(937) 492-0888 | Quiznos Sub
(937) 492-5400 | Winger's Sports Bar & Grill
(937) 497-8333 |
| CJ's Highmarks
(937) 498-0072 | Dairy Queen
(937) 492-5305 | |



Sidney Visitors Bureau P: (937) 492-9122 (866) 892-9122
101 S. Ohio Ave., Floor 2, Sidney, OH 45365

Sidney was established as the county seat of Shelby County, Ohio in 1819. Visitors will find many historical attractions to see as well as recreational parks, activities and events to experience.

Visitors may enjoy the outdoors in Tawawa Park located within the city on 192 wooded acres. Try the many hiking trails, fishing, picnic areas and historic covered bridge. Lake Loramie State Park is to the north of the city and includes a 1600 acre lake and 30 miles of shoreline. It is ideal for the family who wishes to boat, camp, fish or swim. Bicycles may be rented at the camp's office allowing visitors to explore the park and nearby community of Fort Loramie.



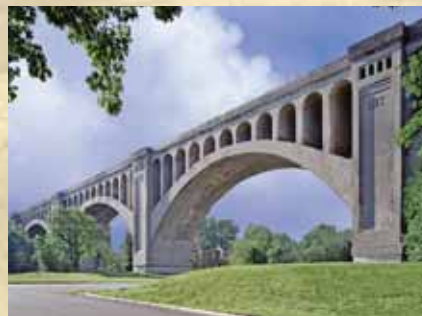
Nearby Jackson Center is the home of Airstream, the renowned travel trailer manufacturer and a popular stop for many who travel through the area. The company conducts daily tours giving visitors an opportunity to experience first hand how the American legend Airstream™ is built.



History abounds in downtown Sidney and visitors may take a self guided tour around the Courthouse Square. This area is a National Registered Historic District. Points of interest include the majestic Shelby County Courthouse, considered to be one of the finest in the nation, People's Federal Savings and Loan designed in 1917 by famed architect Louis Sullivan and the Monumental Building, constructed to honor the County's Civil War dead. This structure was recently restored and renovated and is now home to the Sidney Municipal Court. Also on the square is the famous Spot Restaurant which began as a chuck wagon owned by Spot Miller in 1907.



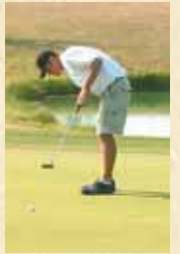
Just one block north of the courtsquare, visitors will find the Ross Historical Center which houses artifacts of our rich heritage. The Center also features an impressive research center with computer access to a variety of local history information, photos and stories. To the south of downtown stands the Big Four Railroad Bridge which was completed in 1923. It was known as the Cleveland, Cincinnati, Chicago and St. Louis (thus the Big Four Railroad), later the Bee line, and after 1930, the New York Central Railroad. The double wide track is still in use.



Clockwise from top left: Shelby County Courthouse, Peoples Federal Savings & Loan, Monument on the square, Ross Historical Center, Monumental Building with Sergeant Baker and the Big Four Railroad Bridge.



Golfers must try their skills at Shelby Oaks Golf Course north of Sidney. A driving range and 27 hole course will challenge players of all levels.



Country music fans

flock to Hickory Hill Lakes campground every July for the Country Concert. This three-day extravaganza features top artists and non-stop entertainment. Wrapping up the summer in Shelby County is the Applefest with family friendly events and food centered around the historic courtsquare.



We look forward to your visit!



Covered Bridge at Tawawa Park, Applefest, Lockington Dam and GreatStone Castle.

Photo courtesy of Sidney Daily News